



**Judy Ross**  
of **Judy Ross Textiles**

**product** Window  
**standout** Hand-knotted Chinese silk accents provide a surprising depth of field against Tibetan wool in breezy combinations of lustrous hues or custom colors. 212-842-1705; [judyrosstextiles.com](http://judyrosstextiles.com). **circle 566**



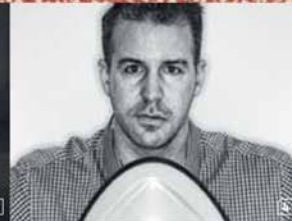
**Domingos Ferreira**  
for **Two.Six**

**product** Tiles  
**standout** Portuguese tiles go off the wall and onto the floor in a blend of New Zealand and Portuguese wools, all hand-tufted, in colorways like yellow, sky, and brick as well as custom sizes. 351-253220583; [twosix.pt](http://twosix.pt). **circle 567**



**Tania Johnson**  
of **Tania Johnson**

**product** London  
**standout** Traces of raindrops on windows inspired this hand-knotted wool-and-silk gem, offered in gold stone, terracotta gray, and black gray—and patterns for drier climates such as Zurich, Newton, and Winchester. 44-7979-193-971; [taniajohnsondesign.com](http://taniajohnsondesign.com). **circle 568**



**Chad Jensen**  
for **Orley Shabahang**

**product** Chateau & Parc  
**standout** A map hand-drawn by Pierre Lepautre in the late 17th century is translated into a 100 percent natural undyed wool rug, created in a Meyghan weave. 239-594-1098; [thomasrileystudio.com](http://thomasrileystudio.com). **circle 569**

