

## flooring

### Judy Ross

With the delicacy of blossoms floating in lazy circles on a pond, the bloom formations of *Carousel* appear to bob and sway. Runners are 3 by 6 feet, and rugs are 6 by 9 feet. All are hand-knotted wool, with up to 30 percent silk, in a palette that includes pollen, fig silk, cream silk, and silver silk. They are also fully customizable and available in chainsitch. 212-842-1705; judyrosstextiles.com. **circle 642**



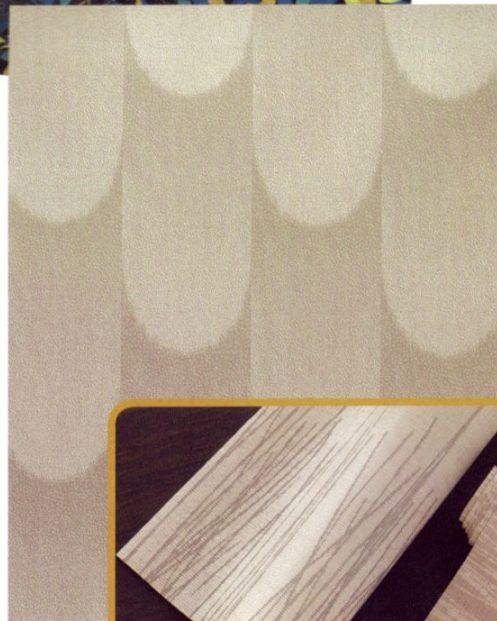
### Emma Gardner Design

With *Aviary*, Emma Gardner incorporates silk silhouettes overlaid on densely patterned wool grounds. The drama of the debossed silk is heightened by the peacock colors. These hand-knotted carpets are available in both standard and custom configurations. 860-567-5201; emmagardnerdesign.com. **circle 638**

### Kasthall

For this Swedish firm, designer Johan Carper has developed *Storm*, a wall-to-wall carpet with woolen and anti-static nylon pile in 6½-foot widths.

The carpet's expressive geometrical repetition creates a soft pattern, while its yarn generates a grid, bringing to life the circular movements of the motif. 212-421-0220; kasthall.com. **circle 639**



### Vicki Simon Rugs

The *Secret Life of Turtles* as they saunter off in their inimitable, meandering way is reflected in the design of this rug's raised and cut-pile woolen areas. Fallen leaves are represented in cut-pile green linen on an olive and dark-brown, earth-toned ground. Custom sizes and colors are standard for these U.S.-made rugs. 800-400-6636; vickisimon.com. **circle 641**



### Chilewich

Sandy Chilewich continues her mission to resurface the world with her ubiquitous woven vinyl, by offering *Scratch!* Plynyl Floor Mats. They are produced from jacquard woven vinyl facings backed with urethane foam, and designed to capture the energy