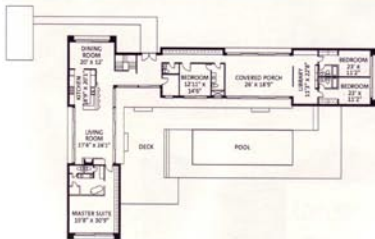




Covered Porch Seamlessly integrating the indoors and outdoors was a basic goal. Several 8-foot sliding-glass doors and fixed glass panels make exterior walls disappear and, as on the covered porch, above, open rooms to the natural surroundings. Brazilian walnut flooring runs throughout the house and extends to the exterior decking where it's protected from the elements by Penofin, a marine-grade oil-based wood finish.

Living Room Floor-to-ceiling glass walls and sliding doors on two sides of the living room, right, reinforce the transparency the architects desired and offer views of the pool and the woods. Inside, a gray-stucco fireplace wall acts as a focal point; the material is repeated on the exterior near the front entrance. "We created continuity from the outside to the inside," says Gilsue.

FLOOR PLAN



The L-shaped plan positions public rooms and the master suite on one side of the pool and patio, and three bedrooms with baths, a study, and a covered porch on the other. The fluidity of this great-room design sets the tone for a casual, modern lifestyle. "The interior rooms are generous but not over-exaggerated," explains architect Gilsue Hariri. The main floor has about 4,000 square feet of living space and the lower level, which includes a guest suite/multipurpose room, laundry, and a two-car garage, about 1,000 square feet.



PRODUCT PICKS

KITCHEN CABINETRY

Opale series in Spring white with frosted-glass and aluminum accents. Snaidero; 877-762-4337, snaidero-usa.com.

KITCHEN COUNTERTOPS

Zodiaq quartz in Vesta Pearl. DuPont Zodiaq; 877-229-3935, zodiaq.com.

LAUNDRY APPLIANCES

Elite front-loading washer and dryer, left. Kenmore Appliances; 800-349-4358, kenmore.com, sears.com.

LIGHTING

HomeWorks whole-house lighting system. Lutron; 877-258-8766, lutron.com.

OVEN

30" wide, double-stack stainless steel ovens. Viking; 888-845-4641, vikingrange.com.

TELEVISION

50" plasma WEGA flat-panel set. Sony; 800-222-7669, sonystyle.com.